

## Specifications of L-0980A

### ●MAIN MICROSCOPE

Model:	L-0980A
Magnification changes:	Ratio 1:6(from 5X to 30X)
Objective lens:	F=175mm
Eyepiece:	12.5X wide field
	Adjusting range of visibility diopter-below -6D to +5D or more.

### Total Magnification and Field of view:

Objective lens:	F=175mm
Total Magnification:	5X to 30X
Field of view(mm):	49mm to 9mm $\phi$
Brightness(max):	80,000Lux( $\phi 6$ )
Coaxial illumination field(mm):	40mm $\phi$

Filter:	Built-in heat absorbing filter, Cobalt filter, 50% ND filter
---------	---

Light Source:	Halogen lamp(15V, 150W) with cold mirror filter equipped..
---------------	---

Range of pupillary distance:	50 -75mm
------------------------------	----------

X-Y Translator:	Range $\pm$ 22.5
-----------------	------------------

### ●VERTICAL FINE CONTROL

Model:	Electric type, using a motor
--------	------------------------------

Adjustment of focus:	40mm
----------------------	------

Focusing speed:	1.3mm/sec.
-----------------	------------

Microscope inclination:	0° to 30°
-------------------------	-----------

### ●FOOT SWITCH

Model:	Floor placement type, stepping type
--------	-------------------------------------

Weight:	4kg
---------	-----



Certificate:  
09 105 89060

**Inami & Co.,Ltd.**

# L-0980A

## OPERATION MICROSCOPE TERA

ZOOM OPERATION MICROSCOPE L-0980A



**L-0980M**  
**MANUAL ZOOM OPERATION MICROSCOPE**  
**GIGA**



Certificate:  
09 105 89060



●Specifications subject to change without prior notice.



**Inami & Co.,Ltd.**

**BIJYOGI RESEARCH INSTITUTE**

No. 3-14-13, Bijyogi, Toda-City,  
Saitama-Pref, 335-0031, Japan  
Tel. 81-48-422-0173 Fax. 81-48-421-3838  
Website :http://www.inami.co.jp  
E-Mail : ibri@inami.co.jp

®TRADE MARK OF INAMI & CO., LTD.

**HEAD OFFICE**

No. 24-2, Hongo 3-Chome,  
Bunkyo-ku, Tokyo 113-0033, Japan  
Tel. 81-3-3814-5916 Fax. 81-3-5684-2126  
Website :http://www.inami.co.jp  
E-Mail : corpinfo@inami.co.jp

®TRADE MARK OF INAMI & CO., LTD.

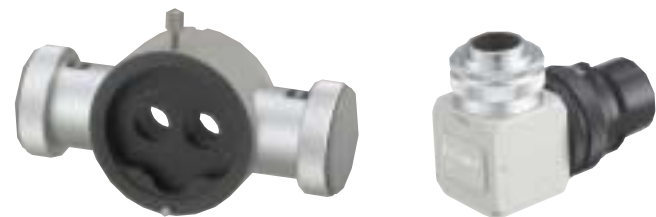


**X-Y TRANSLATOR WITH RE-CENTERING**



**ONE TOUCH BULB CHANGING SYSTEM**

Our new one touch bulb replacement system permits the change of the bulbs without any inconvenient by sliding the fiber cable port to the other side easily.



**OPTIONAL ACCESSORIES**

This is designed to be mounted with any kinds of accessory, especially L-0568 Inamil CCD Camera device with L-0541 Beam splitter and L-0544 TV Camera adaptor



**FULL-FUNCTION FOOT SWITCH**

Special designed Full-function footswitch allows the surgeon without hands over almost all functions, zoom magnifications, X-Y translator device, illumination switch etc.



**L-0980A  
AUTOMATIC ZOOM OPERATION  
MICROSCOPE WITH X-Y DEVICE  
TERA**

**2 STEPS VOLTAGE SELECTOR:**

We have developed a new voltage selector system with 2 steps selector, so this will be available for unstable voltages.

- 100V - 120V AC
- 200V - 240V AC

